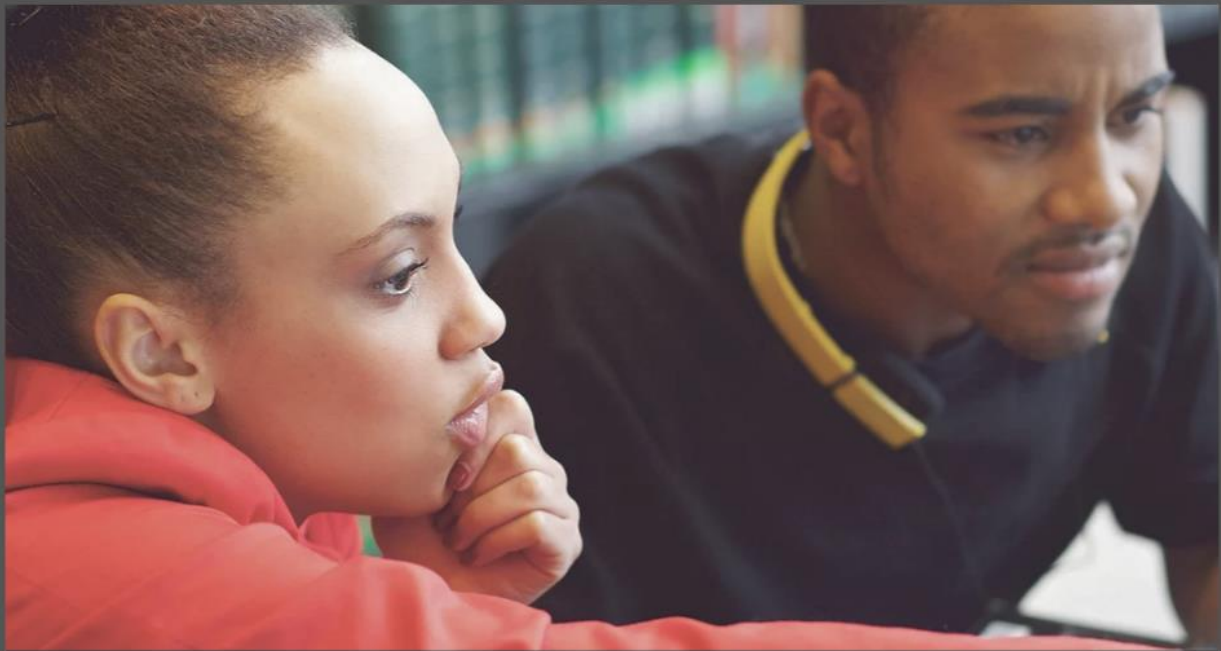


# Supporting LEARNING

## DIGITAL CATALOGUE 2024



*the right resource at the right time for the right student*

2024

[www.supportedlearning.com](http://www.supportedlearning.com)

### Catalogue includes:

SLR workbooklets and subject support booklets  
L1 Supported Learning packages  
L1 Supported Learning Skills for Work  
NCEA L1 Ag/Hort Science packages

SLR worksheet bundles  
NCEA L1 Life Skills packages  
NCEA L1 Tikanga Concept packages  
NCEA L2 Life Skills

## CATALOGUE CONTENTS

Look through the selection of active learning and visual workbooklets and assessment material focusing on skills within a theme to offer opportunities for adolescent learners and options for your staff. All material is emailed in ready-to-print .pdf's so you can use with students by picking and choosing tasks or selecting booklets that are designed to engage students, promote thought, link ideas and encourage recognition of skills and knowledge.

SLR Information and outlines .....	3-8
SLR Workbooklets .....	9
SLR Workbooklet Series One .....	10-11
SLR Workbooklet Series One Plus .....	12-13
SLR Workbooklet @Home Series.....	14
SLR Worksheet Bundles .....	14
SLR Workbooklet Series Two .....	15-17
SLR Workbooklet Social Studies Series .....	18-19
SLR Workbooklet Science Series .....	20-23
SLR NCEA L1 & L2 assessment material outline .....	24-25
SLR L1 Supported Learning assessment material – Life Skills .....	26-30
SLR L1 Supported Learning assessment material – Work Skills .....	31
SLR NCEA L1 Life Skills (Core Generic & Foundation Skills) assessment material .....	32-33
SLR NCEA L1 Tikanga Concepts assessment material.....	34
SLR NCEA L2 Life Skills (Core Generic) assessment material .....	35-37
SLR NZ CERTIFICATE IN SKILLS FOR LIVING FOR SUPPORTED LEARNERS .....	38-41
SLR Final Info and links .....	42-43

© Copyright SLR Ltd Feb 2024

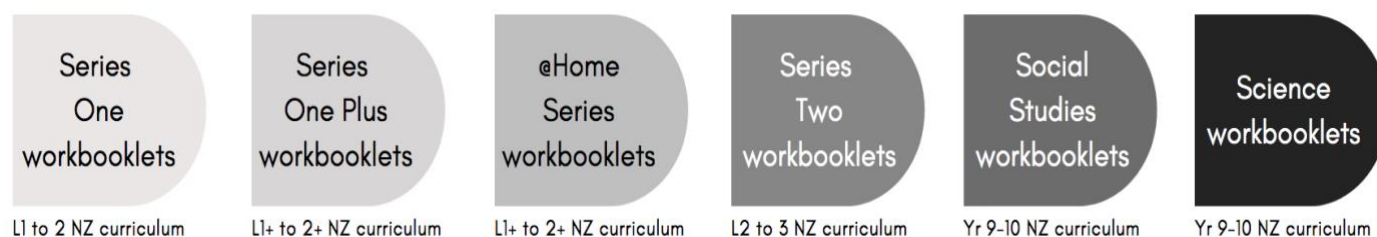
© All material is copyrighted to SLR Resources and is in accordance with the New Zealand Copyright Act 1994 with the following Terms and Conditions for all electronic SLR material: -

- Material can be printed for use within the purchasing school only and should not be shared for use with other schools, organisations, services or professionals.
- SLR material cannot be altered without written approval from Supporting Learning Resources Ltd. This includes adapting SLR material to use digitally.
- SLR reserve the right to decline purchases due to a conflict of interest
- Once an order has been received electronically, it cannot be returned or refunded.

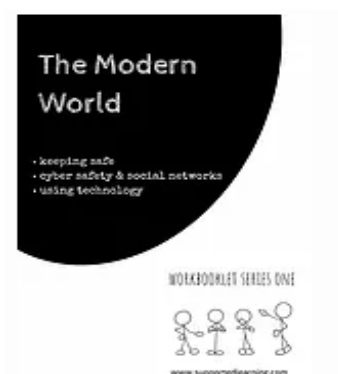
**SUPPORTING LEARNING RESOURCES (SLR)** has developed relevant & engaging blended prior learning work booklets and optional L1-2 assessment material. SLR links skills to build themes that can offer flexibility and fit within curriculum frameworks. This ensures skills & resources are linked together to make sense for educators & learners and are easy to follow giving more options to build programmes of learning relevant for each student with opportunities to engage and use with existing material.

## SUPPORTING LEARNING WORKBOOKLETS

Supporting Learning work booklets support students working within L1-4 of curriculum levels and offer much needed literacy, numeracy, social, thinking and practical skills. The workbooklets are either thematic/skills focused or subject support focus.



- **Series One** and the **Series One Plus** workbooklets – life, social, decision making, thematic skills for students working around curriculum level 1-2.
- **@Home Series** – workbooklets for use at home for students working at lower level curriculums. Words, numbers, movement, projects & sensory.
- **Series Two workbooklets** – thematic blends that can be stand alone or prior learning for L1 Supported Learning blends and useful for students working around curriculum level 2-4
- **Social Studies & Science Workbooklet Series** – practical, easy-to-understand thematic workbooklets to parallel Year 9-10 curriculums and for ongoing use with practical/applied Year 11 students



## SUPPORTING LEARNING WORKSHEETS

A selection of one page worksheets focusing on skills within a theme bundled up in packs of five or ten. Perfect for use in everyday teaching, cover/relief lessons, wet weather days or as a life saver in an emergency.

Ready to use in either a digital .pdf or print out to get started with students. Just select a bundle and watch your students learn and enjoy not having to do all the preparation and layout under pressure yourself.

**\*\* Remember, there are also some freebies on the website in this section!**



**SUPPORTING LEARNING L1-2 ASSESSMENTS**

SLR has developed relevant & engaging blended assessment material for Level 1-2 linking standards into themes to fit within curriculum frameworks or with IEP's. This ensures skills & resources are linked together to make sense for educators & learners and are easy to follow to ensure that all students have a chance at "Success for All".

- **L1 Supported Learning** unit standard assessment packages – titles that recognise learning at L1 for important life and work skills for students needing support (see NZQA for criteria)
- **NCEA L1 Life Skills** (Core Generic & Foundation Skills) assessment packages - financial capability, work and study skills or self-management. These packages offer valuable pathways for some students progressing beyond Supported Learning and for other students needing practical skill and knowledge options at L1.
- **NCEA L1 Tikanga Concepts** assessment packages offer important cultural recognition for all students.
- **NCEA L2 Life Skills** Core Generic L2 assessment options for financial capability, work and study skills and self-management that offer pathways onwards from NCEA L1 but at an achievable level.

**What do you get with each SLR assessment package?**

- SLR learning workbooklet that has engaging, visual and practical tasks to lead students through the key skills for the corresponding L1 or L2 assessment packages.
- SLR candidate assessment material customised with your school/organisation logo and name. This is also offered with a free update to the next version.
- SLR Teacher guidelines and assessment schedule often with sample marking sheets and answers. Most material suggests using professional judgement to ensure a range of answers can be credited.
- SLR blank achievement certificate to offer students quick recognition of achievement as well as gaining credits on their NZQA Records of Achievement.

**Are the SLR packages flexible?**

- All SLR material can be used digitally with a .pdf writer or as printed versions.
- Not all learning tasks in the learning booklet may need to be completed.
- SLR candidate material cannot be altered without contacting SLR due to NZQA quality assurance processes with existing moderation.
- If recording or collecting of evidence is required in an assessment, this will be noted in the task.

**How do we mark L1 & L2 packages?**

- The same way you do for most subjects. Check all is completed, check answers meet the standard in the teacher guidelines and attach all evidence. Have another person verify the marking. See next

## Supported Learning assessment packages

---

Please visit our website to see the current range of packages available for NZ students to ensure pathways and opportunities for “Success for All”. All SLR files are in .pdf and uploaded promptly with an email link sent to the person who orders. A notification is sent for any updates to files.

Current pricing reflects the SLR credit value per blend and SLR material is emailed in .pdf so it can be used unlimited times with your selected students over a period of time.

([NZQA - new suite of Supported Learning unit standards](#)) The latest suite of Supported Learning unit standards was released in November 2017 and have now been moved onto version 3 in 2022. Outlines and samples can be viewed on our website. **Core Generic and Tikanga Concept unit standards are on-going.**

You will be notified when your files/versions need updating or contact SLR if you have a question.

## Marking, Verifying and Moderating SLR assessment material

---

Individual schools/organisations with Consent to Assess each unit standard are responsible for their own marking of student material and must adhere to the SLR Teacher Guidelines and Assessment Schedules and record achievement level/comments in the SLR Assessor Checklist within each blend as well as following their school/organisation and NZQA procedures.

The **marker/assessor** should be someone familiar with the assessment material and could be a TA, Community or Youth Worker, teacher, parent/guardian, workplace supervisor, social worker etc. This person will sign the boxes in the back two pages.

The **verifier** is someone other than the assessor who has a registered teacher status or equivalent (e.g.: US 4098 but this is in agreement with a school). This person will check the markers comments, decisions and assessor checklist and will counter-sign the back two pages.

**For Alternative Education consortiums** with more than one enrolling school, each consortium should decide their own process for verifying candidate assessment material. The AE can mark and if there is no appropriate verifier within the AE team, work could be verified by a designated person at each school, or each enrolling school could take it in turns to verify a pack of marked assessment material. Many AE consortiums are enrolling one staff member in a Level 4 US 4098 course so they can be the verifier (check with each enrolling school that this is an acceptable alternative for their verification processes).



If NZQA contact a school for **moderation**, a sample of up to four student's candidate assessment material for the unit standard required should be organised by the marker and then checked by the verify and each school's Principal Nominee. Please follow your school processes and check each document required is provided to NZQA, as well as all evidence needed to complete the assessment material.

## Updates and developments from SLR

All L1 Supported Learning assessment packages are now version 3 and will be reviewed 31 Dec 2026. Everyone receives the SLR updates via google drive and must then delete previous versions and use Version 3 until 31 Dec 2021 when SLR will update free again once NZQA release version 4.

## Support from SLR

On-going support from the SLR team is available via email, phone Zoom sessions or in any free regional sessions when they are scheduled. If a private session is required, contribution to expenses and time will be quoted and can be shared amongst a cluster of schools/agencies. Please keep an eye on the For Educators section on our website.

The screenshot shows the Supporting Learning website. At the top is a navigation bar with links: home, workbooklets, worksheets, ncea assessments, freebies, questions, for educators, and keep in touch. The main content area features the 'SLR TAKE 5 MINS SERIES' with a description: 'This space is where we will add or share tips & tricks about supporting learning in quick 5min reading PDF's. Just click on each box to download the short .pdf >'. Below this is a grid of 'TAKE 5 MINS' cards. The first card is titled 'TAKE 5 MINS' and lists: '- your time to think', '- your time to absorb', '- your time to plan', and '- your time to just enjoy!'. It also says: 'Welcome to the new thought leadership series that will share ideas, updates, trends, developments, speakers, research & more about supporting our learners ... and most importantly only take 5 mins of your time!'. The other cards in the grid are: '#1 Practical Plan B!', '#2 Putting together a jigsaw puzzle', '#3 Keep it simple - ead skills', '#4 Getting some \$\$\$ together', '#5 Tips for Transition/Literacy subjects', '#6 Taking a moment to plan', '#7 Be kind to yourself', and '#8 The + and - of going digital'. Below the grid are two sections: 'ONLINE SUPPORT' and '1-1 SUPPORT'. The 'ONLINE SUPPORT' section describes a successful five-year 'no charge' regional sessions commitment and mentions that SLR invested over \$50,000 towards nationwide PDL free resources and building networks with schools. The '1-1 SUPPORT' section explains that it is trickier to get the busy SLR team out into regions and schools these days, and that they often have requests to visit a region to offer support, but with many schools in different stages of development these days, they find in person support is better suited to an online ZOOM session or when they are in a region for a presentation and they can offer schools free support while there. It also mentions that when they know they will be in a region, they will post it in the space and ask people to contact them to see if there is interest in offering a free session to share knowledge. Finally, it says: 'Remember - we are always just a phone call (0211001342) or email info@supportedlearning.com! away. If you want to chat, just let us know when and how to contact you and one of the development team will call.'

## Frequently asked SLR questions

Head over to the website to check out all the questions that are often asked about Supporting Learning Resources, how to deliver, to programme, to mark and to feedback to students/parents.

This section will be regularly updated to make sure all questions are there to help others.

1. all resources and assessments can help achieve within a specialist learning area :-

learning centres

special needs units

alternative education

distance learning

home schooling

2. and resources can also be used as learning material in subject areas :-

## LITERACY/ENGLISH



**Series One booklets:** It's all About Me, Off to the Mall, The Modern World

**Series One Plus booklets:** Read It. Write It. Speak It, Research & Present It, Explore It,

**Series Two booklets:** Crazy Communication, Here to Help, How Can I Help You?, My Whanau & I, Office Works

**Subject support booklets:** All Social Studies & Science booklets have key literacy tasks

**L1 Supported Learning packages:** Use Your Words literacy (5), Communicate With Me (4) Sort It Out (5), Joint Effort (5), Work Pathways (4)

**NCEA L1 Core Generic/Foundation packages:** Our Digital World - Digital Literacy (5), Words Around Us (5), We Have Got This (3), Research for Learning L1 (4), Produce a CV (2), Challenging Choices (7)

**NCEA L2 Core Generic packages:** Research for Learning (3 credits), Planning Our Learning (5 credits)

## NUMERACY/MATHS



**Series One booklets:** Organise Me, Count Me In, Add It Up, It's All About the Money

**Series Two booklets:** Let's Buy It, Money. Money. Money. Nuclear Numbers, Time for a Date, Weighing It Up

**L1 Supported Learning packages:** Use All The Numbers numeracy (5)

**NCEA L1 Core Generic/Foundation packages:** Money Paperwork (5), Numbers Making Sense (5)

**NCEA L2 Core Generic packages:** Money for Life (3), Setting Yourself Up (6), Where to From Here? (3)

## SCIENCE



**Series Two booklets:** Planting Roots (free download), Weighing It Up

**Science booklets:** 20 booklets linking to the Y9-10 NZ Science curriculum and covering the themes The Living World, The Material World, The Physical World, Planet Earth & Beyond

**L1 Supported Learning packages:** A Perfect Plan (5)

**NCEA L1 Ag/Hort Science:** Grow Our Plants (4), Landscapes & Features (3)

**NCEA L1/2 Core Generic packages:** Research for Learning L1 and L2

## HUMANITIES &amp; TIKANGA



**Series One booklets:** The Modern World

**Series One Plus booklets:** Confidence Plus

**Series Two booklets:** My Whanau & I, It's A Small World, Knowing NZ, Serving Communities

**Social Studies booklets:** Kiwiana, the Wider World, NZ Past & Present, In the World's Past, Money, Trade, Resources, Keeping NZ Beautiful

**L1 Supported Learning package:** Know Our Place (4) Around Our Community (5)

**NCEA L1 Tikanga packages:** Pōwhiri (2), Whakapapa (2)

**NCEA L1 Foundation packages:** Lead the Way (3)

PE/HEALTH	<p>→ <b>Series One booklets:</b> It's All About Me, Safety First, Help Me, It's All About Caring, Growing Up</p> <p><b>Series One Plus booklets:</b> All Emotional</p> <p><b>Series Two booklets:</b> Fun Fitness, Tween to Teen, Mix n Match, Changing Faces, Keeping Safe, Looking After Me, Challenging Choices</p> <p>→ <b>Science booklets:</b> Science – Food &amp; Digestion, Sport &amp; Medicine</p> <p><b>L1 Supported Learning packages:</b> I'm Important Too (6), The World Today (4) Communicate With Me (4), Up Close &amp; Personal (4), Sort It Out (5), Joint Effort (5)</p> <p><b>NCEA L1 Core Generic/Foundation packages:</b> Challenging Choices (7), We Have Got This (3) plus more to come</p> <p><b>NCEA L2 Core Generic packages:</b> Planning Our Learning (5), Manage &amp; Understand Self (6), Networks &amp; Support (5)</p>
OPTIONS	<p><b>Series One booklets:</b> Food – Feed Me, We Are What We Eat, IT – The Modern World</p> <p><b>Series One Plus booklets:</b> Technology - Design It 1 &amp; 2 (hard &amp; soft materials), Upcycle It, Music/Technology/Visuals – Explore It, Art/Photography/ Drama/Music – A Creative Mind</p> <p>→ <b>Series Two booklets:</b> Food - Masterchef Madness, Weighing It Up, IT – Office Works, Crazy Communication, How Can I Help You?</p> <p><b>L1 Supported Learning packages:</b> A Perfect Plan (4 credits - Technology, Food OR Work focus)</p> <p><b>NCEA L1/2 Core Generic or Tikanga packages:</b> Pōwhiri (2 credits), Whakapapa (2)</p>
CAREERS	<p><b>Series One Plus:</b> Moving On. Moving Up (free download)</p> <p><b>Series Two booklets:</b> Potential Pathways, Office Works</p> <p>→ <b>L1 Supported Learning packages:</b> Skills for Work (20 credits) - Work Pathways (4 credits), Work Placements (8), Rights &amp; Responsibilities for Work (8), A Perfect Plan (5 credits – work/goals focus)</p> <p><b>NCEA L1/2 Core Generic packages:</b> L1 Produce a CV (2), L2 Future Focused (10), It's All About Work (8)</p>
LIFE/SOCIAL SKILLS	<p>→ <b>Series One booklets:</b> All workbooklet titles</p> <p><b>Series One Plus booklets:</b> All workbooklet titles</p> <p><b>Series Two booklets:</b> All workbooklet titles</p> <p><b>L1 Supported Learning packages:</b> Sort It Out (5), Joint Effort (5), Around Our Community (5), I'm Important Too (6), Up Close &amp; Personal (4), There is Always a Solution (5), Use Your Words literacy (5), Use All the Numbers numeracy (5)</p> <p><b>Skills for Work package</b> - Work Pathways (4), Work Placements (8), Rights &amp; Responsibilities (8) or all three for (20)</p> <p><b>NCEA L1 Core Generic/Foundation packages:</b> Research for Learning (4 credits), Alcohol, Drugs, Anger &amp; Well-being (7), See all the new Foundation Skills packages.</p> <p><b>NCEA L2 Core Generic packages:</b> Planning Our Learning (5 credits), Research for Learning (3), Manage &amp; Understand Self (6), Networks &amp; Support (5)</p>

Head over to our website [www.supportedlearning.com](http://www.supportedlearning.com) to check out any of the above titles and view sample pages. Go to the [workbooklet](#) tab to find Series One, One Plus, Two, Social Studies and Science booklets or over to the [assessment](#) tab to find the L1 Supported Learning and Skills for Work, Tikanga, L1 & 2 Core Generic /Life Skills range, as well as NZ Certificate outlines.



## SLR WORKBOOKLET SERIES



Series One workbooklets	Series One Plus workbooklets	@Home Series workbooklets	Series Two workbooklets	Social Studies workbooklets	Science workbooklets
1 to 2 NZ curriculum	L1+ to 2+ NZ curriculum	L1+ to 2+ NZ curriculum	L2 to 3 NZ curriculum	Yr 9-10 NZ curriculum	Yr 9-10 NZ curriculum

SUPPORTING LEARNING RESOURCES (SLR) active learning and visual workbooklets offer opportunities for adolescent learners and options for your staff in a range of different series to offer “education for all”. Each series focus on different curriculum levels and are scaffolded to lead learners onto the next level.

SLR workbooklets can be used thematically or with a skills focus or as support within subject areas to offer relevant material for learners. Series One Plus has been specifically designed to support Year 9-10 curriculum areas as well as the Social Studies and Science subject booklets.

All SLR material is in .pdf's ready to use with students by picking and choosing tasks or selecting booklets designed to engage students, promote thought, link ideas, encourage recognition of skills and knowledge. SLR workbooklets can also be used digitally with a .pdf writer to retain all formatting and visuals. Tasks weave in literacy, numeracy, thinking, social and problem solving skills throughout each theme.



## series one workbooklets

literacy  
numeracy  
subjects

Series  
One  
workbooklets

L1 to 2 NZ curriculum

Series  
One Plus  
workbooklets

L1+ to 2+ NZ curriculum

@Home  
Series  
workbooklets

L1+ to 2+ NZ curriculum

Series  
Two  
workbooklets

L2 to 3 NZ curriculum

Social  
Studies  
workbooklets

Yr 9-10 NZ curriculum

Science  
workbooklets

Yr 9-10 NZ curriculum

SUPPORTING LEARNING Series One Workbooklets have been designed for adolescents working around Level 1-2 of the New Zealand Curriculum and often with high learning needs. The workbooklet in Series One are skill-based in a modern context for students for understand & relate to with 15+ practical, active and visual tasks to choose from within each booklet ... you can also pick your workbooklets to create programmes.

Each Series One booklet has three relevant skill or knowledge areas within a theme and can be stepping stones towards Level 1 skills and lead into Supported Learning assessment material.

They cover life skills, thinking skills, subject skills, literacy and numeracy to help prepare students towards a pathway for "Success for All".

### The Modern World

- keeping safe
- cyber safety & social networks
- using technology

WORKBOOKLET SERIES ONE



www.supportedlearning.com

SLR Series One can be purchased as individual .pdf titles for \$45, as a group or mix n matched with other workbooklets to take advantage of the bulk buy discount offered when purchasing 5, 10, 15, 20 booklet.

See the next page for Series One titles →

Then, head over to the website to explore titles and sample pages for Series One.

### Getting Around

- maps
- timetables
- planning

WORKBOOKLET SERIES ONE



www.supportedlearning.com

## SERIES ONE WORKBOOKLETS (see website for outline, sample pages and pathways)

<b>IT'S ALL ABOUT ME</b>	<ul style="list-style-type: none"> <li>▪ Hygiene</li> <li>▪ Personal Organisation</li> <li>▪ Getting Ready</li> </ul>
<b>ORGANISE ME</b>	<ul style="list-style-type: none"> <li>▪ Time</li> <li>▪ Calendars</li> <li>▪ Routines</li> </ul>
<b>COUNT ME IN</b>	<ul style="list-style-type: none"> <li>▪ Counting</li> <li>▪ Memory</li> <li>▪ Sequencing</li> </ul>
<b>FEED ME</b>	<ul style="list-style-type: none"> <li>▪ Breakfast</li> <li>▪ Lunches</li> <li>▪ Snacks</li> </ul>
<b>SAFETY FIRST</b>	<ul style="list-style-type: none"> <li>▪ Personal Safety</li> <li>▪ Road Safety</li> <li>▪ Water Safety</li> </ul>
<b>ADD IT UP</b>	<ul style="list-style-type: none"> <li>▪ Numbers</li> <li>▪ Calculations</li> <li>▪ Budgeting</li> </ul>
<b>HELP ME</b>	<ul style="list-style-type: none"> <li>▪ Symbols</li> <li>▪ Seeking Help</li> <li>▪ Support at school</li> </ul>
<b>HOW I BEHAVE</b>	<ul style="list-style-type: none"> <li>▪ Emotions</li> <li>▪ Triggers</li> <li>▪ At School</li> </ul>
<b>GETTING AROUND</b>	<ul style="list-style-type: none"> <li>▪ Maps</li> <li>▪ Timetables</li> <li>▪ Planning</li> </ul>
<b>WE ARE WHAT WE EAT</b>	<ul style="list-style-type: none"> <li>▪ Menus</li> <li>▪ Healthy Eating</li> <li>▪ Eating Out</li> </ul>
<b>IT'S ALL ABOUT THE MONEY</b>	<ul style="list-style-type: none"> <li>▪ Coins and notes</li> <li>▪ Bank accounts</li> <li>▪ Spending safely</li> </ul>
<b>OFF TO THE MALL</b>	<ul style="list-style-type: none"> <li>▪ Dressing</li> <li>▪ Shopping</li> <li>▪ Social Manners</li> </ul>
<b>IT'S ALL ABOUT CARING</b>	<ul style="list-style-type: none"> <li>▪ Self-care</li> <li>▪ Caring for Others</li> <li>▪ Caring for Pets</li> </ul>
<b>THE MODERN WORLD</b>	<ul style="list-style-type: none"> <li>▪ Keeping Safe</li> <li>▪ Cyber Safety</li> <li>▪ Social Networks</li> </ul>
<b>GROWING UP</b>	<ul style="list-style-type: none"> <li>▪ Friendships</li> <li>▪ Relationships</li> <li>▪ Conversations</li> </ul>





Series  
One  
workbooks

L1 to 2 NZ curriculum

Series  
One Plus  
workbooks

L1+ to 2+ NZ curriculum

@Home  
Series  
workbooks

L1+ to 2+ NZ curriculum

Series  
Two  
workbooks

L2 to 3 NZ curriculum

Social  
Studies  
workbooks

Yr 9-10 NZ curriculum

Science  
workbooks

Yr 9-10 NZ curriculum

SUPPORTING LEARNING Series One Plus workbooks are an exciting development for students working around L1+ to 2+ of the NZ curriculum and help build valuable skills on from Series One and towards Series Two/L1. These booklets introduce some L1 style tasks to build on from Series One and extend some tasks up towards the higher end of L2 to create pathways.

Series One Plus booklets add depth to basic skills & tasks with the potential to link into subject specific areas or use as stand-alone booklets. We have added in valuable material to support students in key subject areas or students working in mainstream classes needing level appropriate tasks while embedding literacy, thinking, social and problem solving skills in each booklet.

### MOVING ON. MOVING UP.

- new surroundings & people
- primary to secondary
- junior to senior
- moving onto new places

WORKBOOKLET SERIES ONE PLUS



NAME: \_\_\_\_\_  
Version 1.2018

www.supportedlearning.com

The TECHNOLOGY strand is supported with booklets Design It (hard materials and softer materials) and Upcycle It. The ARTS strand is supported by the 6-section booklet A Creative Mind as well as the Explore It bundle. PE/HEALTH can enjoy exploring hauora in A Healthy You and Confidence Plus while LITERACY areas can focus on the multi booklet bundles in Read It. Write It. Speak It and Research & Present It. So much choice to add engaging learning in curriculum areas.

Head over to the website to explore titles and sample pages.

### A HEALTHY YOU

- physical health
- emotional & mental health
- growth & development
- understanding ourselves

WORKBOOKLET SERIES ONE PLUS



NAME: \_\_\_\_\_  
Version 1.2018

www.supportedlearning.com

## SERIES ONE PLUS WORKBOOKLETS (see website for outline, sample pages and pathways)

<b>DESIGN IT</b>	<p>Subject support for Technology: -</p> <ul style="list-style-type: none"> <li>• Design It (1) – HARD materials (plastic, wood, metal, design, projects)</li> <li>• Design It (2) – SOFTER materials (paper, fabric, wool, food, design, projects)</li> </ul>
<b>A HEALTHY YOU</b>	<p>Subject support for PE/Health: -</p> <ul style="list-style-type: none"> <li>• Physical health. emotional &amp; mental health</li> <li>• Personal growth &amp; development</li> <li>• Understanding ourselves</li> </ul>
<b>A CREATIVE MIND</b>	<p>Subject support for The Arts: -</p> <ul style="list-style-type: none"> <li>• Photography and Art</li> <li>• Drama and Dance</li> <li>• Music and Technology</li> </ul>
<b>READ IT. WRITE IT. SPEAK IT</b>	<p>Subject support for English/Social Studies: -</p> <ul style="list-style-type: none"> <li>• READ texts &amp; messages</li> <li>• WRITE simple notes, sentences, texts &amp; emails</li> <li>• SPEAKING skills, making enquiries &amp; responses</li> </ul>
<b>RESEARCH &amp; PRESENT IT</b>	<ul style="list-style-type: none"> <li>• Research skills and different presentations</li> <li>• Current and social events</li> <li>• The wider world - understand &amp; linking research, notes and ideas</li> </ul>
<b>EXPLORE IT</b>	<ul style="list-style-type: none"> <li>• Music &amp; Sounds</li> <li>• Film &amp; Documentaries</li> <li>• Art &amp; Technology plus (including using phones)</li> </ul>
<b>UPCYCLE IT</b>	<ul style="list-style-type: none"> <li>• Ideas &amp; tools</li> <li>• Craft, furniture, gifts</li> <li>• Make &amp; create projects</li> </ul>
<b>CONFIDENCE PLUS</b>	<ul style="list-style-type: none"> <li>• Knowing your hood and easing anxiety</li> <li>• Moving around school, community and home confidently</li> <li>• Giving, listening to and acting on everyday instructions</li> <li>• Outside our comfort zones</li> </ul>
<b>MOVING ON. MOVING UP. (Transitions)</b>	<p>Free .pdf download on website: -</p> <ul style="list-style-type: none"> <li>• New surroundings &amp; people</li> <li>• Primary to secondary transitions</li> <li>• Junior to senior transitions</li> <li>• Transitions on from school</li> </ul>



## @home series workbooklets

Series One workbooklets

L1 to 2 NZ curriculum

Series One Plus workbooklets

L1+ to 2+ NZ curriculum

@Home Series workbooklets

L1+ to 2+ NZ curriculum

Series Two workbooklets

L2 to 3 NZ curriculum

Social Studies workbooklets

Yr 9-10 NZ curriculum

Science workbooklets

Yr 9-10 NZ curriculum



SUPPORTING LEARNING has developed a range of workbooklets focusing on learning @Home. This was to help support learners and caregivers during the important Covid-19 periods and now focuses on students who learn from home.

The series has FIVE free themed workbooklets leading learners and caregivers through L1-2+ curriculum tasks centered around **words, numbers, movement, projects and sensory** themes. Download for free and let SLR guide your learners through the workbooklets.

The workbooklets are flexible (not EVERY task needs to be completed), practical (focus on your home & surrounds), useful (builds key skills) and ENJOYABLE!!! You can add tasks, have discussions, collect objects, extend or simplify a theme!



SUPPORTING LEARNING **WORKSHEET BUNDLES** offer flexible 1-2 page worksheets within a theme and are perfect for everyday tasks, cover/relief lessons, wet weather days or an emergency! Four .pdf bundles are ready for use with your students. A selection of one page SUPPORTING LEARNING worksheets focusing on skills within a theme bundled up in packs of five or ten. Perfect for use in everyday teaching, cover/relief lessons, wet weather days or as a life saver in an emergency. Ready to use ... just select a bundle and watch your students learn without you having to spend hours preparing the lesson.

Head over to the website to view each bundle and download the freebies.

## series two workbooklets

active  
meaningful  
useful

Series  
One  
workbooklets

L1 to 2 NZ curriculum

Series  
One Plus  
workbooklets

L1+ to 2+ NZ curriculum

eHome  
Series  
workbooklets

L1+ to 2+ NZ curriculum

Series  
Two  
workbooklets

L2 to 3 NZ curriculum

Social  
Studies  
workbooklets

Yr 9-10 NZ curriculum

Science  
workbooklets

Yr 9-10 NZ curriculum

SUPPORTING LEARNING Series Two workbooklets are useful for students working around curriculum level 2-3+ and offer thematic blends that can be stand alone or prior learning for L1 Supported Learning packages and are . The 21 titles in Series Two cover life skills, thinking skills, subject skills, every day literacy & numeracy to help prepare students towards a pathway for “Success for All”.

Each .pdf workbooklet is filled with relevant, practical and achievable tasks. The tasks can be used as suggestions, as a base for additional knowledge, or as a programme of learning. The tasks focus on active and practical learning opportunities, using your local area and resources, encouraging social interaction and transferring skills between tasks.



The Learning Checklist at the back of each booklet links into key skills, competencies and knowledge areas. It can be used to support IEP/ILP's, as additional reporting to parents and the useful assessment for learning checklist is a personal reflection for each student. The SLR checklists are a useful way to judge a student's progress or competency within a theme before moving onto the L1 Supported Learning assessment pathways. Head over to the website to explore titles and sample pages for Series Two or look through each title on the next pages →



**SERIES TWO WORKBOOKLETS** (see website for outline, sample pages and pathways)

<b>BIG DAY OUT</b>	<ul style="list-style-type: none"> <li>▪ Moving around</li> <li>▪ Safety first</li> <li>▪ Out &amp; about</li> <li>▪ Planning a big day out</li> </ul>
<b>DAY TO DAY CHALLENGES</b>	<ul style="list-style-type: none"> <li>▪ Every day choices</li> <li>▪ Emotional Choices</li> <li>▪ Serious situations &amp; prep</li> <li>▪ Hazards &amp; Disasters</li> </ul>
<b>CHANGING FACES</b>	<ul style="list-style-type: none"> <li>▪ Emotions &amp; expressions</li> <li>▪ Reactions</li> <li>▪ Support</li> </ul>
<b>CRAZY COMMUNICATION</b>	<ul style="list-style-type: none"> <li>▪ Types of communication</li> <li>▪ Technology</li> <li>▪ Hear it, see it</li> <li>▪ Problem solving</li> </ul>
<b>FUN FITNESS</b>	<ul style="list-style-type: none"> <li>▪ Exercise &amp; fitness</li> <li>▪ Different sport &amp; leisure</li> <li>▪ Body parts</li> <li>▪ Knowing your body</li> </ul>
<b>HERE TO HELP</b>	<ul style="list-style-type: none"> <li>▪ Communication</li> <li>▪ Using a phone</li> <li>▪ Messages &amp; Emailing</li> </ul>
<b>IT'S A SMALL WORLD</b>	<ul style="list-style-type: none"> <li>▪ Social manners</li> <li>▪ Social occasions</li> <li>▪ Other cultures</li> <li>▪ Interacting with others</li> </ul>
<b>KEEPING SAFE</b>	<ul style="list-style-type: none"> <li>▪ Physical risk</li> <li>▪ Emotional risk</li> <li>▪ Personal property</li> <li>▪ Harmful substances</li> </ul>
<b>LET'S BUY IT</b>	<ul style="list-style-type: none"> <li>▪ Calculator functions</li> <li>▪ Work it out</li> <li>▪ Saving &amp; shopping</li> <li>▪ Out &amp; about</li> </ul>
<b>LOOKING AFTER ME</b>	<ul style="list-style-type: none"> <li>▪ Self-care</li> <li>▪ Minor illnesses</li> <li>▪ Minor injuries</li> <li>▪ Personal hygiene</li> </ul>
<b>MASTERCHEF MADNESS</b>	<ul style="list-style-type: none"> <li>▪ Food safety &amp; hygiene</li> <li>▪ Food related jobs</li> <li>▪ Everyday food options</li> <li>▪ Planning &amp; Cooking</li> <li>▪ Food settings</li> </ul>

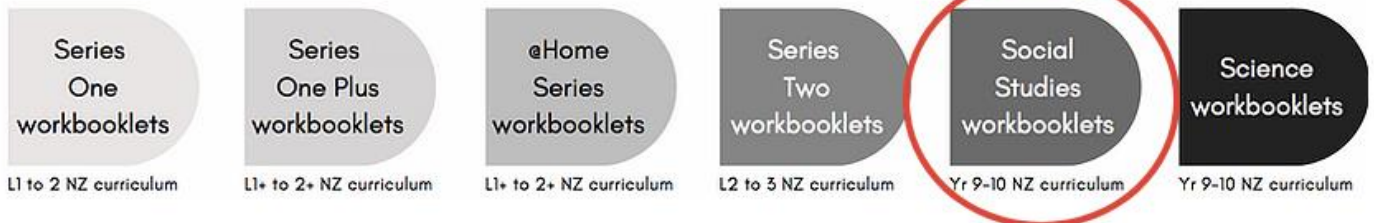
**SERIES TWO WORKBOOKLETS** (see website for outline, sample pages and pathways)

<b>MIX N MATCH</b>	<ul style="list-style-type: none"> <li>▪ Body parts &amp; functions</li> <li>▪ Spatial awareness</li> <li>▪ Visual memory</li> <li>▪ Games &amp; instructions</li> </ul>
<b>MONEY MONEY MONEY</b>	<ul style="list-style-type: none"> <li>▪ Everyday use of money</li> <li>▪ Needs &amp; wants, shopping</li> <li>▪ Keeping money safe</li> <li>▪ Earning &amp; support</li> </ul>
<b>NUCLEAR NUMBERS</b>	<ul style="list-style-type: none"> <li>▪ Basic counting</li> <li>▪ Low numbers everyday</li> <li>▪ Larger numbers</li> <li>▪ Objects &amp; games</li> </ul>
<b>OFFICE WORKS</b>	<ul style="list-style-type: none"> <li>▪ Type it up</li> <li>▪ Display it</li> <li>▪ Talk about it</li> <li>▪ Follow instructions</li> </ul>
<b>POTENTIAL PATHWAYS</b>	<ul style="list-style-type: none"> <li>▪ Setting goals</li> <li>▪ Career pathways</li> <li>▪ Support people &amp; services</li> </ul>
<b>TIME FOR A DATE</b>	<ul style="list-style-type: none"> <li>▪ Understanding time</li> <li>▪ Dates &amp; calendars</li> <li>▪ Time management</li> </ul>
<b>TWEEN TO TEEN</b>	<ul style="list-style-type: none"> <li>▪ Body parts &amp; reproduction</li> <li>▪ Sexuality</li> <li>▪ Sexual choices &amp; decisions</li> </ul>
<b>WEIGHING IT UP</b>	<ul style="list-style-type: none"> <li>▪ Measuring length</li> <li>▪ Measuring weight</li> <li>▪ Measuring volume</li> </ul>
<b>HOW CAN I HELP YOU?</b>	<ul style="list-style-type: none"> <li>▪ Needs</li> <li>▪ Wants</li> <li>▪ Making requests</li> </ul>



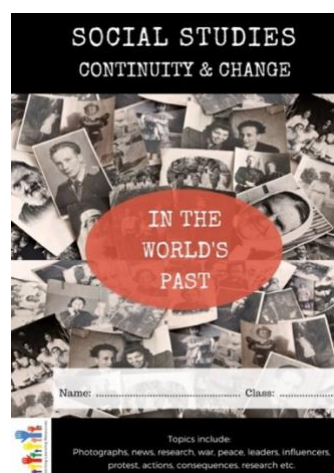
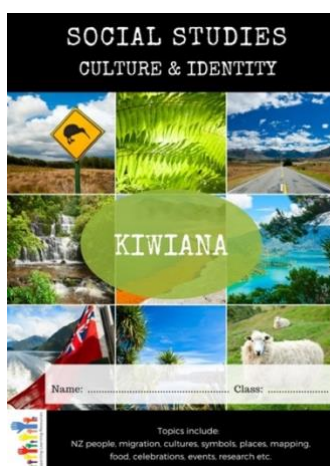
## social studies workbooklets

people  
place  
past



The SUPPORTING LEARNING Social Studies workbooklet series has been designed to support students who need practical, visual and achievable tasks in Social Studies. The workbooklets are skill-based in themes so students can apply skills/content to modern contexts and use their environment to explore ideas around L1-4 of the NZ Social Studies curriculum.

Students will enjoy learning about New Zealand and the wider world through tasks that they can manage and apply to ideas around them. Just pick Social Studies workbooklets that will interest your students & create your own learning programmes or use as support material within inclusive Social Studies classrooms.





**SOCIAL STUDIES WORKBOOKLETS** (see website for outline, sample pages and pathways)

Theme	Title	Outline
<b>CULTURE &amp; IDENTITY</b>	<b>KIWIANA</b>	NZ people, culture, symbols in NZ, places, food, celebrations, stereotypes, current events etc.
	<b>THE WIDER WORLD</b>	Places, world symbols, culture, food, celebrations, migration, refugees, current events etc.
<b>CONTINUITY &amp; CHANGE</b>	<b>IN THE WORLD'S PAST</b>	Photographs, news, finding information, war, conflict, leaders, research and present it, current events etc.
	<b>NEW ZEALAND'S PAST &amp; PRESENT</b>	NZ timeline, patterns, key milestones, leaders, government, key events, research, current events etc.
<b>PLACE &amp; ENVIRONMENT</b>	<b>KEEPING NZ BEAUTIFUL</b>	Places, landscapes, environment, urban, rural, industries, protection, consequences, research, current events etc.
<b>ECONOMIC WORLD</b>	<b>MONEY TRADE RESOURCES</b>	World currencies, making money, making and using resources, trade, goods, services, economic decisions (world and NZ), research, current events etc.

- Content & skills link into Yr 9-10 NZ Social Studies curriculum or use as stand-alone workbooklets.
- Head over to the website to explore titles and sample pages for Social Studies and special deals
- More titles, focus projects and topical skills will be added to this popular Supporting Learning series

## science workbooks

living world  
material world  
physical world  
planet earth

Series  
One  
workbooks

L1 to 2 NZ curriculum

Series  
One Plus  
workbooks

L1+ to 2+ NZ curriculum

@Home  
Series  
workbooks

L1+ to 2+ NZ curriculum

Series  
Two  
workbooks

L2 to 3 NZ curriculum

Social  
Studies  
workbooks

Yr 9-10 NZ curriculum

Science  
workbooks

Yr 9-10 NZ curriculum

The SUPPORTING LEARNING Science workbooklet series has been designed & developed for learners needing appropriate tasks for their level & focused topics that reflect the current New Zealand science curriculum. The Science series offers 20 booklets covering the four important themes within the Yr9-10 NZ Science curriculum – The Living World, The Material World, the Physical World and Planet Earth and Beyond.

Science students from Year 9 -11+ can enjoy learning at a level that makes sense from any or all of the 20 themed workbooklets that embed simple information alongside visual, practical and achievable tasks to support science staff and support staff and have been developed for students that need alternative material and/or support with learning.

## SCIENCE

Living World  
workbooklets

NAME: \_\_\_\_\_  
CLASS: \_\_\_\_\_

View each Science booklet outline and sample pages on the SLR website or the titles on the following pages and either link them into your science curriculum content or textbooks and or use as tasks for science specific knowledge and skills to ensure the right material at the right level is offered to your students.

ALL ABOUT PLANTS

Each booklet has a learning checklist and feedback to help support students with IEP's.



## SCIENCE

Material World  
workbooklets

NAME: \_\_\_\_\_  
CLASS: \_\_\_\_\_

METALS



- All SLR Science booklets can be bought separately for \$45 a .pdf or as discount bundles (5, 10, 15 or 20 workbooklets).
- The SLR Science series can also be mixed n matched with other SLR workbooklets to take advantage of the discount bundles.
- Head over to the website to view each of the 20 workbooklets, outlines and sample pages or look through the following SLR Science titles.



THE LIVING WORLD	CONTENT OUTLINE
<b>SIMPLE CELLS &amp; STRUCTURES</b>	Living and Non-Living Things, MRS GREN, Living Processes, Cell Structures and Organelles, Additional Teaching Suggestions for Cell Structures, Using A Microscope, Activities Using A Microscopes, Additional Teaching Suggestions for Microscopes
<b>ALL ABOUT PLANTS</b>	Plant Cells, Plant Parts, Plant Functions, Additional Teaching Suggestions for Plant Cells and Structure, Different Reproduction, Photosynthesis, Flower Structure, Pollination, Fertilisation, Germination, Seed Structure and Development, Additional Teaching Suggestions for Plant Reproduction,
<b>ANIMAL REPRODUCTION</b>	Animal Cells, Human Reproduction, Male and Female Reproduction, Puberty, Menstruation Cycle, Fertilisation, Pregnancy, Additional Teaching Suggestions for Animal Reproduction, Learning Checklists, Learning Feedback
<b>FOOD &amp; DIGESTION</b>	Nutrients, Diet, Labels, Digestion, Structure of Humans, Human Digestive System, Finding Food, Catching Food, Using Food, Growth, Energy, Additional Teaching Suggestions, Learning Checklists, Learning Feedback
<b>ECOLOGY &amp; FOOD WEBS</b>	Ecology Definition, Structure, Producers, Consumers, Decomposers, Food Chains, Food Webs, Habitats, RecyclingNutrients, Diet, Labels, Digestion, Structure of Humans, Human Digestive System, Finding Food, Catching Food, Using Food, Growth, Energy, Preserving Habitats
<b>SPORT &amp; MEDICAL SCIENCE</b>	Anatomy, Physiology, Bones, Muscles, Joints, Blood, Heart & Circulation, Respiration, Breathing, Senses, Disease and Repair, Body Chemistry, Teaching Suggestions to Show Knowledge of Science in Sport

## THE MATERIAL WORLD

### CONTENT OUTLINE

<b>MATTER</b>	Types & Uses of Matter, Elements, Atoms, Periodic Table, Neutrons and Electrons, Particles, Additional Teaching Suggestions for Measuring Matter, Properties – Chemical and Physical and Changes, Mixtures and Separating Mixtures, Compounds, Solutions
<b>SOLIDS, LIQUIDS, GASES</b>	Definitions of Solids, Liquids and Gases, Oxygen, Carbon Dioxide and Hydrogen, Changes in Temperature – Boiling, Melting and Freezing Points, Evaporation, Explanations of Why They Change State
<b>REACTIONS</b>	Reactions, Physical Change, Chemical Change, Chemical Reactions, Mini modules – In the Kitchen, In the Workshop. Out & About, Mad & Bad, Pop/Whizz/Bang, Flash/Fizz, Science First
<b>MIXING &amp; SEPARATING</b>	Common Mixtures, Pure Substances, Separation Techniques, Filters, Solubles, Saturations, Evaporation, Distilling, Fingerprints and Forensic Science,
<b>METALS</b>	Metal or Non-Metal, Different Metals, Conductors, Metal Reactions and Effects, Acids and Metals, Corrosion

## THE PHYSICAL WORLD

### CONTENT OUTLINE

<b>ENERGY &amp; WAVES</b>	Different Types of Energy Forms, Pendulums & Balls, Energy Transformations, Thermal Energy, Solar Energy, Electrical Energy, Kinetic Energy, Waves, Energy Travelling as Waves
<b>LIGHT &amp; SOUND</b>	Describing Light, Images, Light Observations, Light Reflections, Refractions, Senses for Light, Eye Structure, Colour & Filters, Describing Sound, Sound & Vibrations, Hearing Sound
<b>FORCES &amp; MOTION</b>	Describe Forces, Units of Force, Gravity, Forces Affecting Motion, Drawing Force Diagrams, Friction, Speed & Units of Speed, Effects of Speed, Mass & Weight
<b>ELECTRICITY &amp; MAGNETISM</b>	Defining Electricity, Static & Circuit Electricity, Circuit Diagrams, Batteries, Conductions, Insulators, Voltage, Magnets & Magnetic Fields, Electromagnets
<b>ACIDS &amp; BASES</b>	Definitions, Compare Properties, Strong & Weak Reactions, pH Scales, Enzymes, Neutralisation, Acid Rain, Additional Teaching Suggestions for Microscopes

**PLANET EARTH & BEYOND**

**CONTENT OUTLINE**

<b>ASTRONOMY</b>	Ideas About Astronomy, Basic Astronomy, Earth Rotations, Earth Movements, The Sun, Moon & Earth Relationship, Tides, Eclipses, Space & Stars, Solar System & Planets, Space Travel,
<b>TECTONICS</b>	Volcano, Fault Lines, Earthquakes, Tsunami, Mountain Ranges, Continental Jigsaw, Continental Drift, Plate Tectonics, Maori Mythology
<b>WATER, MINERALS &amp; ROCK</b>	Water Supply, Water Cycle, Transpiration, Evaporation, Drought, Floods, Erosion, Rocks, Caves, Fossils, Rock Cycle, Additional Teaching Suggestions, Learning Checklists, Learning Feedback
<b>NATURAL DISASTERS</b>	Current Events Linking to Science, NZ Natural Focus, Transferring Science Skills to Aid, Additional Teaching Suggestions, Learning Checklists, Learning Feedback





## SLR ASSESSMENT PACKAGES



<b>L1 SUPPORTED LEARNING (LIFE SKILLS)</b>	<p>This suite of 13 L1 Supported Learning packages will help recognise even more of your students skills and knowledge and can be applied in a range of meaningful and valuable contexts for students needing support with their learning. Look through the SL packages to see how targeted students can gain recognition within Level 1 options by having the right material at the right time for the right student.</p> <p>The prior learning workbooklets and L1 assessment material is easy-to-follow with practical and active life-related tasks, relevant discussions and transferable skills.</p>
<b>L1 SUPPORTED LEARNING (WORK SKILLS)</b>	<p>Three L1 Supported Learning packages for students focusing on "work-readiness" and lead towards practical work skills. They are important gateway packages that help transition students move towards independence and offer life skills.</p> <p>The Skills for Work packages blend valuable learning with practical workplace expectations as students start to work towards life after school to create meaningful pathways for all students.</p>

<p><b>NCEA L1 LIFE SKILLS (CORE GENERIC)</b></p>	<p>SLR has developed work-ready, relevant &amp; engaging assessment material for NCEA Level 1 Life Skills from the Core Generic domain unit standards that link valuable unit standards into themes similar to our successful L1 Supported Learning assessment packages and offer valuable options for students.</p> <p>These life skills ensure skills &amp; knowledge link together for practical application in student lives within the three NCEA L1 Core Generic themes (financial capability, work &amp; study skills and social skills) and are easy-to-follow with clear pathways onto further learning or employment.</p>
<p><b>L1 FOUNDATION SKILLS (CORE GENERIC)</b></p>	<p>This new sub domain within the Core Generic L1 domain offers 12 new opportunities to bridge the gap for many learners leading into NCEA L1 or as alternative foundation skills opportunities within the NZ Certificate in Foundation Skills (separate NZQA Consent to Assess is needed for this qualification – see NZQA website).</p>
<p><b>NCEA L1 TIKANGA CONCEPTS</b></p>	<p>SLR's two NCEA L1 Tikanga Concepts assessment material packages focuses on A Powhiri - Protocols &amp; Roles (2 credits) and Your Whakapapa and Key Terms (2 credits) and are for ALL students. These two packages also link into the NZ Certificate in Skills for Living (for supported learners)</p> <p>These tikanga concept packages are a great opportunity to add national recognition to learning programmes both in and outside the classroom and to add more options to the SLR portfolio of assessment material to customise student pathways.</p>
<p><b>NCEA L2 LIFE SKILLS (CORE GENERIC)</b></p>	<p>Work-ready, relevant &amp; engaging life skills assessment material for NCEA Level 2 Core Generic unit standards that link common unit standards into themes. These lead on well from all NCEA L1 packages, especially the NCEA L1 Life Skills options.</p> <p>These packages ensure skills &amp; knowledge link together for practical life skills within the three Core Generic themes (financial capability, work &amp; study skills and social skills) and are easy-to-follow with clear pathways onto further learning or employment.</p>

## SLR L1 SUPPORTED LEARNING ASSESSMENT PACKAGES



NZQA have developed a suite of 16 unit standards to recognise important skills and knowledge for students who need support with their learning at Level 1. The 16 unit standards offer opportunities for students to show a range of literacy, numeracy, practical, problem solving and work related skills within their learning programmes and link into L1 assessment material.

### How does SUPPORTING LEARNING RESOURCES deliver these standards for schools?

SLR uses modern, visual and thematic learning booklets to help recognise even more of your students' knowledge. Tasks are scaffolded to support students in an engaging way. SLR material is written in simple, easy-to-follow language in short, accessible tasks and also includes the L1 candidate assessment and teacher guidelines within the packages. SLR material is delivered in pdf to offer digital and/or paper options.

### Who can do supported learning standards?

Supported Learning unit standards have been designed by NZQA for students who need support with their learning at L1 to achieve "success for all". Students can be identified through learning or intellectual disabilities, or students needing an adapted programme.



Workbook for US00005 - Set personal goals and carry out a plan designed to achieve personal goals - NZQA L1.4 credits version 3

- hard & soft materials
- adapting materials
- design & concepts
- needs & wants
- design plans & steps
- evaluations

Name: \_\_\_\_\_

Supporting LEARNING

The suite of SUPPORTED LEARNING packages to help recognise even more of our student's skills and knowledge and can be applied in a range of meaningful and valuable contexts for students needing support with their learning. Look through the following SLR options showing how students needing support work at Level 1 by having the **right material at the right time for the right student.**

## L1 SUPPORTED LEARNING PACKAGES (see website for outline, sample pages and what you get)

Unit Standard	Criteria and Requirements Summary	Credits and Price
<b>AROUND OUR COMMUNITY</b>  US 29299 - Access and use facilities and services in the community	<p>This theme works through a range of activities to provide information about accessing facilities and services in the community. Some facilities or services may be for recreation or may help us with a particular problem or issue. After we know what is around us AROUND OUR COMMUNITY uses information about facilities and services to help look after us, how we use them in everyday lives and how each facility or service can be used in the future.</p> <ul style="list-style-type: none"> <li>Community facilities &amp; services described for purpose</li> <li>Community facilities &amp; services are actively used for specific needs</li> </ul>	5 credits \$325
<b>I'M IMPORTANT TOO</b>  US 29300 - Maintain hauora - personal health and wellbeing	<p>An important theme that works with the definition of hauora and how it relates to our personal health and well-being. We look at how our body works, different ways we can move it, different food we can put into it and how we can keep hygienic. I'M IMPORTANT TOO also explores puberty, sexual health and sexuality options so we can understand more about ourselves and our options.</p> <ul style="list-style-type: none"> <li>Strategies identified to maintain hauora</li> <li>Strategies for hauora applied to personal needs</li> </ul>	6 credits \$350
<b>THE WORLD TODAY</b>  US 29301 - Demonstrate strategies to ensure personal safety	<p>THE WORLD TODAY works through a range of activities helping us to think about how we can all keep safe in the world today. We work through tasks about personal safety, cyber safety, road safety, water safety, injuries and illnesses, hazards and disasters and finally, keeping money safe. It also helps us think about strategies when we are in situations that may be unsafe and strategies that can help keep others safe.</p> <ul style="list-style-type: none"> <li>Strategies are identified in terms of personal safety in specified situations</li> <li>Strategies for personal safety demonstrated are appropriate to specified situations</li> </ul>	4 credits \$295
<b>COMMUNICATE WITH ME</b>  US 29302 - Demonstrate interpersonal skills in familiar contexts	<p>When we interact with people, we use a range of interpersonal skills to communicate our message, to offer feedback, to share ideas, solve problems or negotiate. Different situations mean we will use different interpersonal skills. COMMUNICATE WITH ME works through how we interact with people familiar to us. Students will show how they can use their interpersonal skills in familiar contexts. The contexts could be chatting with friends, family, colleagues, coaches or more formal interviews, meetings, planning sessions etc.</p> <ul style="list-style-type: none"> <li>Interpersonal skills appropriate to context – one person</li> <li>Interpersonal skills - group</li> </ul>	4 credits \$295



Unit Standard	Criteria and Requirements Summary	Credits and Price
<b>UP CLOSE AND PERSONAL</b>  US 29303 - Demonstrate behaviours appropriate to different types of relationships and contexts	<p>We all experience different feelings and relationships and UP CLOE &amp; PERSONAL starts students thinking about the relationships around them. This could be with friends, family, coaches, mentors, church leaders etc and formal or informal. The style of the relationship can also change if needed or if different people are around us. We also have a range of behaviours we use in relationships. This package looks at body language, how we talk to people, how close we stand or if we touch others.</p> <ul style="list-style-type: none"> <li>Relationships identified and described in personal situations</li> <li>Behaviours demonstrated appropriate to relationship &amp; contexts</li> </ul>	4 credits \$295
<b>KNOW OUR PLACE</b>  US 29304 - Describe elements of own culture, basic rights, and responsibilities of residing in Aotearoa New Zealand	<p>This is an important and relevant theme that works through a range of tasks that help students identify with residing in Aotearoa. KNOW OUR PLACE covers own culture outlining family history and cultural practices, as well as showing how a student understands their basic human rights and responsibilities of being a citizen of Aotearoa New Zealand. It is filled with useful social and thinking skills about NZ laws, environment &amp; culture.</p> <ul style="list-style-type: none"> <li>Own culture described family history and culture</li> <li>Basic human rights described for citizen of NZ</li> <li>Basic responsibilities described for citizen of NZ</li> </ul>	5 credits \$320
<b>A PERFECT PLAN</b>  US 29305 – Set personal goals and carry out a plan to achieve personal goals	<p>A PERFECT PLAN works through a range of activities to show skills and knowledge about planning and doing a project. We often make goals to help us in social, education, work, financial contexts etc. These goals can be broken down into steps so we know what to do &amp; when to do each step. After we complete a goal, it is useful to look back and think about how effective our plan was to achieve, the steps we took, the timeframe to achieve the goal, and whether we would do it the same way next time, or for another goal.</p> <ul style="list-style-type: none"> <li>Goals broken down in achievable steps and carried out in timeframe</li> <li>NOTE: this package includes THREE different options for delivering: <b>Technology</b> focus, <b>Food</b> focus and <b>General learning/setting goals</b> focus all included</li> </ul>	5 credits \$320
<b>THERE IS ALWAYS A SOLUTION</b>  US 29306 - Apply problem solving strategies to resolve day-to-day issues	<p>THERE IS ALWAYS A SOLUTION works through tasks that help students think about being in different situations that could trigger stress, anger, grief, making choices etc. with a range of activities that help us think about different situations we face that can trigger issues. It is useful to have already thought about what we may feel and how we could react in different situations so we have some strategies that will help us cope. This theme is relevant, practical, engaging and thought provoking for young adults.</p> <ul style="list-style-type: none"> <li>Situations that could trigger issues are identified</li> <li>Possible strategies to solve issues identified</li> <li>One selected strategy applied to solve issues</li> </ul>	5 credits \$325

Unit Standard	Criteria and Requirements Summary	Credits and Price
<b>USE YOUR WORDS</b>  US 29307 – Use functional literacy skills in a range of day-to-day contexts.	<p>Each literacy booklet is scaffolded to include simple literacy tasks around reading, writing and speaking and includes key literacy tasks (marked with an *) that can be used as evidence for US29306. Visual literacy is embedded throughout alongside plenty of listening skills. There are more tasks included in the booklets than required, so there is flexibility to choose topics and tasks students engage with to ensure the key US29306 requirements are met.</p> <ul style="list-style-type: none"> <li>• Language, symbols and text are used to communicate</li> <li>• Speaking, reading, writing, visual communication, listening</li> <li>• Day to day contexts – daily living, recreation, community, work, education, culture &amp; tradition</li> </ul>	5 credits \$325
<b>USE ALL THE NUMBERS</b>  US 29308 - Use functional numeracy skills in a range of day-to-day contexts.	<ul style="list-style-type: none"> <li>• Numeracy skills are applied to carry out everyday tasks</li> <li>• Addition, subtraction, multiplication, division, measurement, time, statistics, sequences, comparisons</li> <li>• Day to day contexts - daily living, community, work, education, recreation</li> </ul>	5 credits \$325
<b>SORT IT OUT &amp;/or FOOD FOR LIFE (2 options)</b>  US 32929 - Maintain routines in a limited range of repetitive and familiar situations within defined contexts	<ul style="list-style-type: none"> <li>• TWO context options included in price – see website</li> <li>• Five routines identified for a purpose and/or need</li> <li>• Routines are demonstrated to meet the purpose in accordance with health and safety practices</li> <li>• Strategies to meet routines identified to show time management</li> <li>• Routines identified are maintained over time</li> </ul>	5 credits \$325
<b>JOINT EFFORT</b>  US 32927 - Maintain commitments in a limited range of repetitive and familiar situations within defined contexts	<ul style="list-style-type: none"> <li>• Three commitments identified for a purpose and/or need</li> <li>• Commitments are demonstrated to meet the purpose in accordance with health and safety practices</li> <li>• Strategies to meet commitments identified to show time management</li> <li>• Commitments identified are maintained over time</li> </ul>	5 credits \$325

*See also the three skills for working supported learning assessment packages on the following pages.*

### What does a SLR assessment package give us?

1. Student learning workbooklet introducing key tasks to lead a student towards the L1 assessment. A learning checklist is included to ensure students are able to do each skill before attempting the assessment material. 2. A candidate assessment tasks for the L1 assessment. 3. Teacher guideline and assessor schedule. 4. An achievement certificate. All are in .pdf so can be digital or printed. Check out the website for sample pages for booklets and assessment tasks.

### What if we are still using the original Supported Learning unit standards?

The original suite of NCEA L1 was officially expired and formally replaced with the above suite of Supported Learning unit standards that link to the Graduate Outcomes for the NZ Certificate in Skills for Living for Supported Learners Level 1). These cover an important range of literacy, numeracy, social, thinking and problem solving schools to help students have their skills recognised at L1.

If you had a previous theme that you loved using, download the realignment table on the website to see what is the closest fit. Or, just email us and we will help you out.

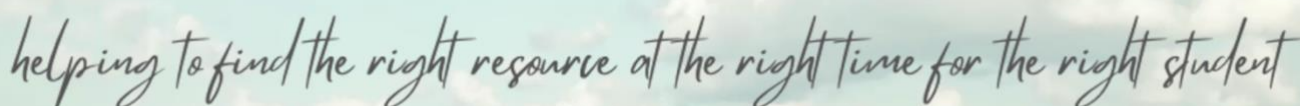
### What is the NZ Certificate in Skills for Living for Supported Learners about?

The New Zealand Certificate in Skills for Living for Supported Learners (Level 1) is a 60 credit entry level qualification intended for people who require specialised support with their learning. They are people with learning disabilities, including those with an intellectual disability, and who need an adapted qualification.

It is a qualification separate to NCEA L1 and schools/agencies need to apply to NZQA for consent to assess. See the NZQA website or later section at the end of this catalogue..

### For information about programming, delivery, marking, uploading credits etc?

Check out the questions page on the website to find out most answers or head to the For Educators section.



*helping to find the right resource at the right time for the right student*

## SLR L1 SUPPORTED LEARNING - workskills assessment packages



SUPPORTING LEARNING's L1 "Skills for Working" assessment material packages for supported learners will help recognise your students work-readiness! These L1 packages are for students needing support with their learning and adapted programmes that will lead towards practical work skills. Like all SLR material, the prior learning workbooklets and L1 assessment material is easy-to-follow with practical and active work-related tasks, relevant discussions and transferable skills to create meaningful pathways for all students **SEE WEBSITE SPECIAL OFFER.**

## L1 SUPPORTED LEARNING PACKAGES - WORK SKILLS

<b>YOUR WORK PATHWAYS</b>  US 29309 – Plan a personal work pathway	<ul style="list-style-type: none"> <li>• Work pathway includes set goals informed by research</li> <li>• Goals within planned pathway broken down into achievable steps</li> </ul>	4 credits \$295
<b>YOUR WORK PLACEMENTS</b>  US 29310 - Apply basic skills and practices in a work place context	<ul style="list-style-type: none"> <li>• Assigned tasks are carried out in accordance with the instructions received</li> <li>• Health &amp; Safety practices are applied in accordance with workplace requirements and H &amp; O safety</li> </ul>	8 credits \$450
<b>RIGHTS &amp; RESPONSIBILITIES FOR WORK</b>  US 29311 - Act in accordance with the basic rights and responsibilities needed for work	<ul style="list-style-type: none"> <li>• Basic employee rights are identified in accordance with the Employment Relations Act 2000 and employment agreement</li> <li>• Work responsibilities and requirements demonstrated are relevant to specific workplace and in accordance with basic rights of an employee</li> </ul>	8 credits \$450



## SLR NCEA L1 LIFE SKILLS assessment packages



SUPPORTING LEARNING has developed work-ready, relevant & engaging life skills assessment packages for NCEA Level 1 focusing on important life skills from the NZQA Core Generic domain. These packages group common unit standards into life skill themes similar to our successful L1 Supported Learning assessment range.

This ensures important daily skills & knowledge link together for practical life skills and are easy-to-follow with clear pathways onto further learning or employment. These packages are open to any student to build pathways.

**NCEA L1 WORK AND STUDY SKILLS** (see website for outline, sample pages and what you get)



SLR CORE GENERIC blends	Unit Standard	Unit Standard Outline	Credits	Price (+ GST)
CURRICULUM VITAE	504	Produce a CV	2	
TOTAL			2	\$200
RESEARCH FOR LEARNING L1	7121	Demonstrate skills to search, access and select information	2	
	7120	Demonstrate knowledge of note taking	2	
TOTAL			4	\$295

## NCEA L1 SELF-MANAGEMENT

SLR CORE GENERIC blends	Unit Standard	Unit Standard Outline	Credits	Price (+ GST)
CHALLENGING CHOICES	12348	Demonstrate knowledge of anger and options for dealing with anger issues	2	
	548	Demonstrate knowledge of the impact of alcohol and other drugs	2	
	496	Manage personal well-being	3	
TOTAL			7	\$425

## NCEA L1 FINANCIAL CAPABILITY

SLR CORE GENERIC blends	Unit Standard	Unit Standard Outline	Credits	Price (+ GST)
MONEY PAPERWORK	24705	Interpret financial documents and verify accuracy of financial documents for personal financial management	2	
	24709	Produce a balanced budget to manage personal finances	3	
TOTAL			5	\$325

## NEW! SLR L1 FOUNDATION SKILLS

We are pleased to announce the roll-out of our newly released L1 Foundation skills packages from the NZQA Core Generic domain. These 12 packages will cover skills that outline basic literacy and numeracy skills, digital literacy, self-management and resilience skills, cultural and community interactions and the leadership of a rangatira to help students transition and build into L1 programmes and

We have released the first three standards for the start of 2024 Term One and with three more being released in Term One 2024. Our first three packages\* are US23246 (basic literacy), US33248 (digital literacy) and US33157 (self-management & resilience), followed by US33247 (basic numeracy), US33241 (organise personal life) and US33244 (interact with cultures). US33250 (rangatira leadership) will start the next roll out.

To order using the intro prices just email to [info@supportedlearning.com](mailto:info@supportedlearning.com). \* These 12 packages can collectively offer what is required for the NZ Certificate in Foundation Skills Level 1. (more information coming).



## SLR NCEA L1 TIKANGA CONCEPTS assessment packages



SUPPORTING LEARNING's NCEA L1 Tikanga Concepts assessment packages focus on Māori values, processes and practices exercised by Māori in their daily lives and offer two NCEA L1 assessment packages that also contribute to the NZ Certificate in Skills for Living (for supported learners). This tikanga material focuses on **A Powhiri - Protocols & Roles (2 credits)** and **Your Whakapapa and Key Terms (2 credits)** and are for ALL students. These are a great opportunity to start to add an important cultural component to learning programmes both in and outside the classroom and to add more options to the SLR portfolio of assessment material to customise student pathways. **SEE WEBSITE SPECIAL OFFER.**

**NCEA L1 TIKANGA CONCEPTS** (see website for outline, sample pages and what you get)

<b>WHAKAPAPA</b>	<p><b>US 27106* - Describe the terms connected with whakapapa and use terms within one's own whakapapa</b></p> <ul style="list-style-type: none"> <li>Terms connected with whakapapa describe in hierarchical structure</li> <li>Terms connected with one owns whakapapa used in relation to hierarchy</li> </ul>	<p>2 credits \$200</p>
<b>POWHIRI – ROLES &amp; PROTOCOLS</b>	<p><b>US 27108* - Describe the protocol and roles associated with powhiri in accordance with tikanga</b></p> <ul style="list-style-type: none"> <li>Protocols associated with powhiri described for local rituals</li> <li>Describe roles associated with powhiri with tikanga</li> </ul>	<p>2 credits \$200</p> <p>Or both tikanga blends for \$375</p>

*\*The above two Tikanga Concept unit standards are included as part of the New Zealand Certificate in Skills for Living for Supported Learners or can be delivered as separate unit standards. They are a similar curriculum level to SLS.*



## SLR NCEA L2 LIFE SKILLS assessment packages



These practical and purposeful SUPPORTING LEARNING L2 Life Skills assessment packages follow on from the L1 life skills themes. They offer pathways for students needing options to mainstream subjects and packages that blend work, social, thinking and problem solving skills.

These packages focus on important life skills from the NZQA Core Generic domain. Like the L1 life skills, these skills & knowledge areas link together under the financial capability, work and study skills and self-management themes using easy-to-follow learning booklets with clear pathways onto further learning or employment. These packages are open to any student to build pathways.



### NCEA L2 WORK AND STUDY SKILLS (see website for outline, sample pages and what you get)

SLR CORE GENERIC blends	Unit Standard	Unit Standard Outline	Credits	Price (+ GST)
FUTURE FOCUSED	(504)	PRE-REQUI NSITE Level 1 – Produce a CV*	(2)	
	4252	Produce a personal targeted CV	2	
	4253	Demonstrate knowledge of job search skills	3	
	12383	Explore career options and their implications	3	
TOTAL			10	\$495 or \$585

\*Achieving US504 (NCEA L1) is a prerequisite before achieving US4252



SLR CORE GENERIC blends	Unit Standard	Unit Standard Outline	Credits	Price (+ GST)
IT'S ALL ABOUT WORK 8 credits	10781	Produce a plan for own future directions	3	
	10780	Complete a work experience placement	3	
	24871	Complete workplace forms	2	
TOTAL			8	\$495
PLANNING OUR LEARNING 5 credits	7117	Produce a plan to enhance own learning	2	
	7118	Manage own learning programme	3	
TOTAL			5	\$325
RESEARCH FOR LEARNING L2	8824	Research a topic using oral, visual and written sources and evaluate the research process  <i>** This unit standard is excellent for teaching key research skills and linking to the wide range of L2 and L3 research achievement standards within subjects.</i>	3	
TOTAL			3	\$285

## NCEA L2 SELF-MANAGEMENT

SLR CORE GENERIC blends	Unit Standard	Unit Standard Outline	Credits	Price (+ GST)
MANAGE & UNDERSTAND MYSELF 6 credits	12349	Demonstrate knowledge of time management	3	
	12355	Describe stress and ways of dealing with it	3	
TOTAL			6	\$395
NETWORKS AND SUPPORT 5 credits	12352	Describe aspects of one's own lineage, heritage and cultural identity	3	
	1827	Identify support services and resources within the community	2	
TOTAL			5	\$325

## NCEA L2 FINANCIAL CAPABILITY

SLR CORE GENERIC blends	Unit Standard	Unit Standard Outline	Credits	Price (+ GST)
MONEY FOR LIFE 3credits	28094	Produce a balanced budget and adjust the budget to reflect changing financial circumstances	3	
		TOTAL	3	\$255
SETTING YOURSELF UP 6 credits	28097	Evaluate and select personal banking products and services in relation to personal financial needs	3	
	28092	Analyse the effect of significant life events at different life stages on personal financial income	3	
		TOTAL	6	\$395
TERTIARY FUNDING 3 credits	28093	Describe the future financial responsibilities of utilizing tertiary study funding options	3	
		TOTAL	3	\$255

PERSONAL FINANCIAL MANAGEMENT

MONEY PAPERWORK

NAME .....

PERSONAL FINANCIAL MANAGEMENT

MONEY FOR LIFE

NAME .....

PERSONAL FINANCIAL MANAGEMENT

SETTING YOURSELF UP

NAME .....

## New Zealand Certificate in Skills for Living for Supported Learners (Level 1) (with an optional strand in Skills for Working)

The **New Zealand Certificate in Skills for Living for Supported Learners (Level 1)** is a 60 credit entry level qualification intended for people who require specialised support with their learning. They are people with learning disabilities, including those with an intellectual disability.

**Strategic Purpose:** Graduates will be able to self-manage participation in social, cultural, family/whanau and community contexts, with supervision and/or be encouraged to seek further skills and knowledge to improve their educational and employment pathway. There is an optional strand for those candidates who wish to gain specific skills & knowledge required for the workplace. This qualification recognises the aspirations and cultural identities of the disabled communities, and that of Māori and Pasifika.

**Education Pathway:** This qualification may lead to New Zealand Certificate in Foundation Skills (Level 1) or other qualifications on the New Zealand Qualifications Framework at levels one and two.

**Employment Pathway:** Graduates of this qualification with the optional strand in Skills for Working will have the skills and knowledge to work in a structured context, with supervision.

**Community Pathway:** Graduates will contribute to the Aotearoa/New Zealand by participating in their community.

**Entry requirements:** There are no mandatory prerequisites to meet regulatory body or legislative requirements for this qualification.

*See next page for Graduate Profile and Outcomes ...*



## New Zealand Certificate in Skills for Living for Supported Learners (Level 1)

## General conditions for the programme leading to the qualification:

- Outcomes should be integrated across programme design.
- Programmes should demonstrate integrated assessment.
- The assessment of graduate profile outcomes should also be integrated into meaningful contexts, which may include community participation and/or work experience. The context is respectful to Te Tiriti o Waitangi.
- It is necessary for secondary and tertiary providers to work together to consider the learning journey for the target learners. It is suggested that learners may achieve some learning in secondary and be credited with unit standards. They may then continue their pathway of learning at a tertiary organisation towards the Social Skills qualification.
- The programme leading to this qualification recognises the:
  - Code of Health and Disability Services Consumers Rights
  - Role of the Health and Disability Commissioner
  - United Nations 'International agreement on the rights of disabled people' to ensure disabled persons are aware of, and understand their basic rights.
- It is recommended that the programme leading to this qualification recognises that the candidate will require a longer period to acquire and consolidate the skills and knowledge required. The programme may require a longer period of learning than the 600 hours of teaching and learning, as determined by the 60 credits assigned to this qualification. Normally 1 credit equates to 10 hours of teaching and learning. For candidates of this qualification, 1 credit may equate to 10 hours of teaching and learning.
- Assessment opportunities will occur in the learner's wider community in order to increase their participation and advance their self-determination.
- Evidence of achievement must occur on more than one occasion.
- Evidence statements can be collected from observers and participants, using appropriate technology.
- Anticipated support may be utilised as required e.g. cues and adaptive communication tools.
- Responses could be verbal, written or non-verbal and include the use of adaptive or assistive technology. It is expected that the level of support is reflected in the evidence statements.
- Supported Learning unit standards may be used to assess parts or all of the qualification outcomes.

This qualification replaced the National Certificate in Work and Community Skills (Supported Learning) (Level 1) [Ref: 0853].

## Graduates of this qualification will be able to:

- Demonstrate self-management of day to day living situations
- Maintain personal safety, health and well-being.
- Participate and interact in everyday situations.
- Participate in planning a future pathway to achieve personal goals.
- Apply problem-solving strategies to resolve day to day issues.
- Apply literacy and numeracy skills required for day to day living

## Graduates of the Outcomes for Skills for Working strand will also be able to:

- Apply basic skills required to plan a work pathway
- Apply basic skills and practices required to carry out tasks in a work context.
- Act in accordance with the basic rights, responsibilities and requirements needed for work

*See next page for cross referencing of outcomes ...*





Graduate Outcomes	Unit standard	Title	Outcomes							Level	Credits
			1	2	3	4	5	6	Optional		
Demonstrate self-management of day-to-day living situations	32927 and 32929	Maintain routines. Maintain commitments (SLR - SORT IT OUT & JOINT EFFORT)	✓							1	10
	29299	Access facilities and services in the community (SLR - AROUND OUR COMMUNITY)	✓							1	5
Maintain personal safety, health and well-being	29300	Maintain hauora - personal health and wellbeing (SLR - I'M IMPORTANT TOO)		✓						1	6
	29301	Demonstrate strategies to ensure personal safety (SLR - THE WORLD TODAY)		✓						1	4
Participate and interact in everyday contexts	29302	Demonstrate interpersonal skills in familiar contexts (SLR - COMMUNICATE WITH ME)			✓					1	4
	29303	Demonstrate behaviours appropriate to different types of relationships and contexts (SLR - UP CLOSE AND PERSONAL)			✓					1	4
	27106	Describe the terms connected with whakapapa and use terms within one's own whakapapa (SLR - WHAKAPAPA)			✓					1	2
	27108	Describe the protocol and roles associated with powhiri in accordance with tikanga (SLR - POWHIRI)			✓					1	2
	29304	Describe elements of own culture, basic rights and responsibilities of a citizen of Aotearoa New Zealand (SLR - KNOW OUR PLACE)			✓					1	4
Participate in planning a future pathway to achieve personal goals	29305	Carry out plan to achieve set personal goals (SLR - A PERFECT PLAN)				✓				1	5
Apply problem solving strategies to resolve day to day issues	29306	Apply problem solving strategies to resolve day to day issues (SLR - THERE'S ALWAYS A SOLUTION)					✓			1	5
Apply everyday literacy and numeracy required for day-to-day living	29307	Apply literacy in a range of day to day contexts. (SLR - USE YOUR WORDS)						✓		1	5
	29308	Apply numeracy skills in a range of day to day contexts. (SLR - USE ALL THE NUMBERS)						✓		1	5
Total credits										60	

Apply basic skills required to plan a work pathway	29309	Plan a personal work pathway							✓	1	4
Apply basic skills and practices in a work place context	29310	Apply basic skills and practices in a work place context							✓	1	8
Act in accordance to basic rights and responsibilities and requirements needed for work	29311	Act in accordance with the basic rights and responsibilities needed for work							✓	1	8
Total credits										20	

## New Zealand Certificate in Skills for Living for Supported Learners (Level 1)

### Process

Schools or organisations choosing to deliver this qualification should apply to NZQA for Consent to Assess. SLR Documentation to show graduate outcomes and delivery through SLR unit standards can be used to support applications.

Alternatively, students may look to do the qualification as a tertiary option from one of the tertiary organisations delivering the equivalent certificate for later learners (refer to NZQA website for options)

### Prices

#### Price options for applying for and delivering the NZ Certificate in Skills for Living for Supported Learners (60 credits) \* using SLR material

<b>Option One</b>	<p>Purchase all Supported Learning and Tikanga Concept unit standards needing to apply for NZ Certificate in Skills for Living for Supported Learners* (15-unit standards – 60 credits) = <b>\$4285</b>  US29299-29306 + US32927/9 + US27106, 27108</p>	<p><b>SLR DISCOUNTED PACKAGE</b> for all unit standards for NZ Certificate in Skills for Living for Supported Learners* (unit standards - 60 credits) = <b>\$3190</b>  US29299-29306 + US32927/9 + US27106, 27108</p>	<b>Saving \$1095</b>
<b>Option Two</b>	<p>Purchase all Supported Learning and Tikanga Concept unit standards needing to apply for NZ Certificate in Skills for Living for Supported Learners with Skills for Work option (80 credits) = <b>\$5545</b>  US29299-29311 + US32927/9 + US27106, 27108</p>	<p><b>SLR DISCOUNTED PACKAGE</b> for all unit standards (life, work skills and Tikanga) for 80 credits = <b>\$4345</b>  US29299-29311 + US32927/9 + US27106, 27108</p>	<b>Saving \$1200</b>
<b>Option Three</b>	<p>Buy individual Supported Learning assessment material over time to apply for Consent to Assess for this qualification</p>		

\* Most schools (and some organisations) already have consent to assess individual Supported Learning assessments which can be checked on the NZQA website under each individual unit standard *but still need to apply for consent to assess the NZ Certificate in Skills for Living for Supported Learners Work as a qualification.*

\*See website for NZ Certificate in Foundation Skills options and breakdown.

Remember to head over to our website and register for your complimentary sample booklet by filling in the form with your work email and name. then we can email it straight out to you. This new booklet has 3-5 sample pages from each SLR Series and from the L1 or L2 learning booklets to help get you started.

## SUPPORTING LEARNING COMPLIMENTARY SAMPLE BOOKLET

Register with your name and email to receive a complimentary SLR booklet that has 42 pages of tasks from each SLR series, as well as learning tasks from the NCEA L1 Supported Learning workbooks.

The following three pages are from the series 'Support Learning' which covers three key learning skills: counting, measuring and money. It is a 42 page booklet.

**FROM 'COUNT ME IN' COUNTING**

**Task 1a:** In your classroom count:

How many teachers and teacher aides?	
How many students?	
How many practice books or folders do you have?	
How many pencils and pens do you have?	
How many posters are on the wall?	
How many tables and chairs in the classroom?	

**Task 1b:** Go out into a school car park and count:

How many white cars?	
How many silver cars?	
How many motorbikes?	
How many blue cars, trucks or vans?	
How many cars with roof racks?	

**Task 1c:** Walk around your school and count:

How many students?	
How many teachers?	
How many adult staff?	
How many children's bikes?	
How many motorbikes?	
How many cars, trucks or vans?	
How many cars with roof racks?	

### email us for a free SLR booklet

pop a name and work email below for us to email YOU a fab workbooklet to right away that showcases each series ...

First Name \*

Last Name \*

Email Address \*

Organisation \*

That way you can see for yourself how engaging and simple the tasks are. When register, you also receive a discount voucher for future SLR purchases just for your workplace. Win-WIN!!

Finally, for more information on any SLR workbooklet, assessment package or delivery, head over to our website. Check out the freebies page, the For Educators page and of course, the frequently asked questions page ... so many great places to start building your "Success for All" programmes for all students.

home workbooks worksheets ncea assessments freebies questions for educators keep in touch

### Who is SLR material designed for and best suitable for?

Supporting Learning material is designed for students needing a little more support and more visual, active and practical tasks.

Material is written in simple, easy to follow language in short, accessible tasks. Students may or may not be supported by staff or peers, and tasks use their every day surroundings.

SL material is designed for students who need at the right level, that means something in a secondary school setting and can help them achieve NCEA credits. Check out the SLR catalogue for all workbooklets & packages.

### What makes SLR material different?

All our material has been developed from teachers, schools and parents asking us for resources at the right level for the right students. SL resources are easy to use, easy to follow and easy to recognise key skills and knowledge. We write the tasks in age-appropriate language that has plenty of visuals and great layout to ensure the tasks are quick and engaging.

Supporting learning resources weave in important literacy, numeracy, thinking, social and problem solving skills into each booklet or theme ... and tasks are scaffolded to extend students up into the next range or onto NCEA packages. Each SLR booklet has a learning checklist and feedback at the back that can be used for IEP/ILPs.

### Why do SLR resources appeal to so many?

Because they are simple, affordable, flexible and make sense! SLR has a range of workbooklets that can be mixed and matched to support subjects, focus on skills or meet an individual need of a student. These can be used as stand-alone bookletlets, or build skills together to create themes. SLR also offers a range of NCEA L1 and L2 assessment options to make sure the bookletlets have a pathway and that students who need support are offered the chance to gain credits like their peers. In formats that are visual, focused and practical. Booklets are a one-off \$45 for the pdf which can be used over and over again within a school, and NCEA packages also have a free update when versions are reviewed ... a great return on your investment.

### What format is SLR material in?

All SLR material is uploaded in PDF so they can be printed on any colour or size of paper to suit each student's learning challenges or to use digitally.

It also gives you flexibility in what pages or sections you need to print or you can print affordable class sets and can be used digitally with a PDF writer such as Lumin.

Using a pdf writer ensures SLR quality assurance, format and answer options for students. Under the copyright protection, any reformatting must be approved by SLR as it could alter NZQA quality or poor formatting could reflecting poorly on our education brand.

[how to use SLR workbooklets digitally >](#)

### What levels are the SLR workbooklets?

On the SLR workbooklets page you will see this diagram -

Series One workbooklets

Series One Plus workbooklets

etome Series workbooklets

Series Two workbooklets

Social Studies workbooklets

Science workbooklets

Each series of workbooklets are scaffolding to include some previous level tasks, and extend up to the next level. Most tasks can also be adapted to ensure most learners can attempt some key skills within it.

Each series has a focus and can also link into mainstream programmes to help support classroom teachers. SLR workbooklets embed important literacy, numeracy, social, thinking, problem solving tasks within the key tasks.

### Who can teach the workbooklets and who marks them?

Anyone within your school community who works closely with selected students can help deliver SLR material or supervise the students working through the bookletlets. There are plenty of fun, flexible tasks to choose from, and not ALL tasks need to be completed.

For marking workbooklets, simply check answers are appropriate for the question and tick off skills on each learning checklists. For NCEA assessments, a TA or teacher may mark the candidate tasks and another teacher is the verifier (this is school dependent). Your own school uploads the credits.

For organisations without verifiers, you may be able to have staff do US408 to become a marker/verifier.

